



TRANSPORTATION CABINET

Frankfort, Kentucky 40622
www.transportation.ky.gov/

Steven L. Beshear
Governor

Michael W. Hancock, P.E.
Secretary

November 13, 2015

CALL NO. 314
CONTRACT ID NO. 151080
ADDENDUM # 1

Subject: Hopkins County, FD04 SPP 054 0062 000-002
Letting November 20, 2015

- (1) Revised - Plan Sheets - R2B, R5, R9, R17, & R18
- (2) Revised - Bid Items - Pages 128-130 of 130

Proposal revisions are available at <http://transportation.ky.gov/Construction-Procurement/>.

Plan revisions are available at <http://www.lynnimaging.com/kytransportation/>.

If you have any questions, please contact us at 502-564-3500.

Sincerely,

A handwritten signature in cursive script that reads "Rachel Mills".

Rachel Mills, P.E.
Director
Division of Construction Procurement

RM:ks
Enclosures



An Equal Opportunity Employer M/F/D

GENERAL SUMMARY

COUNTY OF	ITEM NO.	SHEET NO.
HOPKINS	02-8501.00	R2B

REVISED 11/12/2015

ITEM	DESCRIPTION	UNIT	US 62	PARCEL 13 PARKING LOT	PARCEL 16 PARKING LOT	SOUTH PARKER ST.	PROJECT TOTALS
1000	PERFORATED PIPE-4 IN (2)(12)	LF	3,689	-	-	-	3,689
1010	NON-PERFORATED PIPE-4 IN (2)(12)	LF	96	-	-	-	96
1015	INSPECT & CERTIFY EDGE DRAIN SYSTEM	LS	1	-	-	-	1
1740	CORED HOLE DRAINAGE BOX CON-4 IN (2)	EACH	24	-	-	-	24
1791	ADJUST MANHOLE FRAME TO GRADE	EACH	2	-	-	-	2
1792	ADJUST MANHOLE	EACH	6	-	-	-	6
1810	STANDARD CURB AND GUTTER (3)	LF	2,299	491	-	-	2,790
1875	STANDARD HEADER CURB	LF	1,572	-	-	48	1,620
1922	STANDARD BARRIER MEDIAN TYPE 4 MOD (4)	SOYD	9	-	-	-	9
2014	BARRICADES, TYPE III	EACH	4	-	-	-	4
2191	STRUCTURE DEMOLITION (5)	EACH	-	1	1	-	2
2200	ROADWAY EXCAVATION (1)	CUYD	2,058	230	17	-	2,305
2242	WATER (6)	MGAL	1	-	-	-	1
2483	CHANNEL LINING CLASS II	TON	41	6	-	-	47
2545	CLEARING AND GRUBBING (13)	LS	1	-	-	-	1
2562	TEMPORARY SIGNS	SOFT	150	-	-	-	150
2569	DEMOBILIZATION	LS	1	-	-	-	1
2585	EDGE KEY	LF	200	-	-	20	220
2650	MAINTAIN AND CONTROL TRAFFIC	LS	1	-	-	-	1
2671	PORTABLE CHANGEABLE MESSAGE SIGN	EACH	2	-	-	-	2
2676	MOBILIZATION FOR MILL & TEXT	LS	1	-	-	-	1
2690	SAFELADING	CUYD	11.04	-	-	-	11.04
2701	TEMPORARY SILT FENCE (7)	LF	500	-	-	-	500
2703	SILT TRAP TYPE A (7)	EACH	2	-	-	-	2
2704	SILT TRAP TYPE B (7)	EACH	2	-	-	-	2
2705	SILT TRAP TYPE C (7)	EACH	74	-	-	-	74
2706	CLEAN SILT TRAP TYPE A (7)	EACH	4	-	-	-	4
2707	CLEAN SILT TRAP TYPE B (7)	EACH	4	-	-	-	4
2708	CLEAN SILT TRAP TYPE C (7)	EACH	148	-	-	-	148
2720	SIDEWALK-4 IN CONCRETE (8)	SOYD	1,284	31	-	-	1,315
2726	STAKING	LS	1	-	-	-	1
5950	EROSION CONTROL BLANKET	SOYD	321	-	-	-	321
5963	INITIAL FERTILIZER	TON	0.164	0.022	0.002	-	0.188
5964	20-10-10 FERTILIZER	TON	0.164	0.022	0.002	-	0.188
5990	SODDING	SOYD	2,840	432	47	-	3,319
5997	TOPSOIL FURNISHED AND PLACED (9)	CUYD	553	-	-	-	553
6510	PAVE STRIPING-TEMP PAINT-4 IN (10)	LF	22,108	-	-	-	22,108
6514	PAVE STRIPING-PERM PAINT-4 IN (11)	LF	11,054	699	625	-	12,378
6566	PAVE MARKING-THERMO X-WALK-12" W (11)	LF	119	-	-	-	119
6568	PAVE MARKING-THERMO STOP BAR-24IN (11)	LF	12	-	-	-	12
6570	PAVE MARKING-PAINT CROSS-HATCH (11)	SOFT	-	253	288	-	541
660INC	PAVE MARKING-PAINT WORDS (11)	EACH	-	1	1	-	2
20206EC	PAVE MARK HANDICAP SYMBOL (11)	EACH	-	2	2	-	4
20550ND	SAWCUT PAVEMENT	LF	4,122	-	-	-	4,122
23327EC	PIPE CLEANOUT EXTENSION (14)	EACH	2	-	-	-	2
23802EC	PRECAST VEHICLE STOP	EACH	-	2	2	-	4
24814EC	PIPELINE INSPECTION (15)	LF	3,727	260	-	-	3,987
23274ENIIF	TURF REINFORCEMENT MAT I	SOYD	154	-	-	-	154
23158ES005	DETECTABLE WARNINGS	SOFT	192	-	-	-	192

EARTHWORK TOTALS	
<u>EXCAVATION</u>	
1,811 CUYD	COM US 62
230 CUYD	COM P13 PARKING LOT
17 CUYD	COM P16 PARKING LOT
0 CUYD	COM S. PARKER ST.
2,058 CUYD	TOTAL COMMON
<u>EMBANKMENT</u>	
546 CUYD	EMB US 62
420 CUYD	EMB P13 PARKING LOT
97 CUYD	EMB P16 PARKING LOT
0 CUYD	EMB S. PARKER ST.
1,063 CUYD	TOTAL EMB
ESTIMATE FOR EARTHWORK CALCULATIONS FOR DESIGN ONLY. THE CONTRACTOR IS ADVISED THAT THE EARTHWORK CALCULATIONS SHOWN ARE FOR INFORMATION ONLY.	

- ① ROADWAY EXCAVATION INCLUDES:
2,058 CUYD COMMON
247 CUYD FOUNDATION BENCHING
2,305 CUYD TOTAL
286 CUYD OF THE 2,058 COMMON IS ASPHALT REMOVAL NOT INCLUDED IN THE CROSS SECTION END AREA VOLUMES. VOLUME WAS CALCULATED BY AN AVERAGE 8 INCH PAVEMENT DEPTH TO BE REMOVED UNDER PROPOSED SODDED AREAS.
- ② QUANTITIES BROUGHT OVER FROM PERFORATED PIPE DRAINAGE SUMMARY.
- ③ DOES NOT INCLUDE CURB & GUTTER WITHIN THE LIMITS OF ENTRANCES.
- ④ 1 FT. WIDE BARRIER TO PROTECT SIDEWALK PEDESTRIAN.
- ⑤ BUILDING REMOVAL (PARCEL 13 & 16) INCLUDES REMOVAL OF ANY STRUCTURES OR SERVICES NOT LISTED AS A BID ITEM.
- ⑥ FOR CONTROLLING DUST CAUSED BY MAINTENANCE OF TRAFFIC ONLY. ESTIMATED AT THE RATE OF 2.125 M GAL PER MILE.
- ⑦ FOR EROSION CONTROL (SEE PLAN SHEET R19).
- ⑧ DOES NOT INCLUDE SIDEWALK WITHIN THE LIMITS OF ENTRANCES.
- ⑨ 553 CUYD OF TOTAL EMBANKMENT SHALL BE TOPSOIL. CALCULATED FROM SODDED AREAS AT A TOPSOIL DEPTH OF 6 INCHES.
- ⑩ FOR 2 PHASES OF MOT, NEEDED ON US 62 AFTER MILLING/TEXTURING AND LEVEL/WEDGING PRIOR TO FINAL SURFACING.
- ⑪ QUANTITY BROUGHT OVER FROM STRIPING PLANS & PARKING LOT DETAIL SHEET R15 & R15A
- ⑫ AGGREGATE BACKFILL & FABRIC-GEOTEXTILE TYPE IV FOR WRAPPING TRENCH EDGEDRAINS IS INCIDENTAL TO THE PERFORATED PIPE.
- ⑬ APPROXIMATELY 3.68 ACRES
- ⑭ INCLUDES FORCEMAIN CLEANOUT
- ⑮ 650 LF OF THE PIPELINE VIDEO INSPECTION QUANTITY IS FOR PIPE INSPECTION OF THE EXISTING STORM SEWER SYSTEM MEASURED AS BEGINNING AT THE EXISTING DROP BOX INLET AT APPROXIMATE STA. 103+09, 33' RT., AND ENDING AT THE OUTLET, BEING LOCATED BEHIND THE BUILDINGS ON THE WEST SIDE OF KY 109. THIS VIDEO INSPECTION IS TO VERIFY THE CONDITION OF THE OUTLET AND SHALL BE IN A DELIVERABLE FORMAT TO THE CITY OF DAWSON SPRINGS PUBLIC WORKS.

US 62 RECONSTRUCTION
GENERAL SUMMARY SHEET

FILE NAME: C:\PWORK\CHARLOTTE_COTTON.D131698_VR020BSU.DGN

USER: charlotte.cotton
DATE PLOTTED: November 12, 2015

E-SHEET NAME: R020BSU

MicroStation v8.11.7.443

GENERAL SUMMARY

COUNTY OF	ITEM NO.	SHEET NO.
HOPKINS	02-8501.00	R2B

REVISED 11/12/2015

ITEM	DESCRIPTION	UNIT	US 62	PARCEL 13 PARKING LOT	PARCEL 16 PARKING LOT	SOUTH PARKER ST.	PROJECT TOTALS
1000	PERFORATED PIPE-4 IN (2)(12)	LF	3,689	-	-	-	3,689
1010	NON-PERFORATED PIPE-4 IN (2)(12)	LF	96	-	-	-	96
1015	INSPECT & CERTIFY EDGE DRAIN SYSTEM	LS	1	-	-	-	1
1740	CORED HOLE DRAINAGE BOX CON-4 IN (2)	EACH	24	-	-	-	24
1791	ADJUST MANHOLE FRAME TO GRADE	EACH	2	-	-	-	2
1792	ADJUST MANHOLE	EACH	6	-	-	-	6
1810	STANDARD CURB AND GUTTER (3)	LF	2,299	491	-	-	2,790
1875	STANDARD HEADER CURB	LF	1,572	-	-	48	1,620
1922	STANDARD BARRIER MEDIAN TYPE 4 MOD (4)	SOYD	9	-	-	-	9
2014	BARRICADES, TYPE III	EACH	4	-	-	-	4
2191	STRUCTURE DEMOLITION (5)	EACH	-	1	1	-	2
2200	ROADWAY EXCAVATION (1)	CUYD	2,058	230	17	-	2,305
2242	WATER (6)	MGAL	1	-	-	-	1
2483	CHANNEL LINING CLASS II	TON	41	6	-	-	47
2545	CLEARING AND GRUBBING (13)	LS	1	-	-	-	1
2562	TEMPORARY SIGNS	SOFT	150	-	-	-	150
2569	DEMOBILIZATION	LS	1	-	-	-	1
2585	EDGE KEY	LF	200	-	-	20	220
2650	MAINTAIN AND CONTROL TRAFFIC	LS	1	-	-	-	1
2671	PORTABLE CHANGEABLE MESSAGE SIGN	EACH	2	-	-	-	2
2676	MOBILIZATION FOR MILL & TEXT	LS	1	-	-	-	1
2690	SAFELoading	CUYD	11.04	-	-	-	11.04
2701	TEMPORARY SILT FENCE (7)	LF	500	-	-	-	500
2703	SILT TRAP TYPE A (7)	EACH	2	-	-	-	2
2704	SILT TRAP TYPE B (7)	EACH	2	-	-	-	2
2705	SILT TRAP TYPE C (7)	EACH	74	-	-	-	74
2706	CLEAN SILT TRAP TYPE A (7)	EACH	4	-	-	-	4
2707	CLEAN SILT TRAP TYPE B (7)	EACH	4	-	-	-	4
2708	CLEAN SILT TRAP TYPE C (7)	EACH	148	-	-	-	148
2720	SIDEWALK-4 IN CONCRETE (8)	SOYD	1,284	31	-	-	1,315
2726	STAKING	LS	1	-	-	-	1
5950	EROSION CONTROL BLANKET	SOYD	321	-	-	-	321
5963	INITIAL FERTILIZER	TON	0.164	0.022	0.002	-	0.188
5964	20-10-10 FERTILIZER	TON	0.164	0.022	0.002	-	0.188
5990	SODDING	SOYD	2,840	432	47	-	3,319
5997	TOPSOIL FURNISHED AND PLACED (9)	CUYD	553	-	-	-	553
6510	PAVE STRIPING-TEMP PAINT-4 IN (10)	LF	22,108	-	-	-	22,108
6514	PAVE STRIPING-PERM PAINT-4 IN (11)	LF	11,054	699	625	-	12,378
6566	PAVE MARKING-THERMO X-WALK-12" W (11)	LF	119	-	-	-	119
6568	PAVE MARKING-THERMO STOP BAR-24IN (11)	LF	12	-	-	-	12
6570	PAVE MARKING-PAINT CROSS-HATCH (11)	SOFT	-	253	288	-	541
660INC	PAVE MARKING-PAINT WORDS (11)	EACH	-	1	1	-	2
20206EC	PAVE MARK HANDICAP SYMBOL (11)	EACH	-	2	2	-	4
20550ND	SAWCUT PAVEMENT	LF	4,122	-	-	-	4,122
23327EC	PIPE CLEANOUT EXTENSION (14)	EACH	2	-	-	-	2
23802EC	PRECAST VEHICLE STOP	EACH	-	2	2	-	4
24814EC	PIPELINE INSPECTION (15)	LF	3,727	260	-	-	3,987
23274ENIIF	TURF REINFORCEMENT MAT 1	SOYD	154	-	-	-	154
23158ES505	DETECTABLE WARNINGS	SOFT	192	-	-	-	192

EARTHWORK TOTALS	
<u>EXCAVATION</u>	
1,811 CUYD	COM US 62
230 CUYD	COM P13 PARKING LOT
17 CUYD	COM P16 PARKING LOT
0 CUYD	COM S. PARKER ST.
2,058 CUYD	TOTAL COMMON
<u>EMBANKMENT</u>	
546 CUYD	EMB US 62
420 CUYD	EMB P13 PARKING LOT
97 CUYD	EMB P16 PARKING LOT
0 CUYD	EMB S. PARKER ST.
1,063 CUYD	TOTAL EMB
ESTIMATE FOR EARTHWORK CALCULATIONS FOR DESIGN ONLY. THE CONTRACTOR IS ADVISED THAT THE EARTHWORK CALCULATIONS SHOWN ARE FOR INFORMATION ONLY.	

- ① ROADWAY EXCAVATION INCLUDES:
2,058 CUYD COMMON
247 CUYD FOUNDATION BENCHING
2,305 CUYD TOTAL
286 CUYD OF THE 2,058 COMMON IS ASPHALT REMOVAL NOT INCLUDED IN THE CROSS SECTION END AREA VOLUMES. VOLUME WAS CALCULATED BY AN AVERAGE 8 INCH PAVEMENT DEPTH TO BE REMOVED UNDER PROPOSED SODDED AREAS.
- ② QUANTITIES BROUGHT OVER FROM PERFORATED PIPE DRAINAGE SUMMARY.
- ③ DOES NOT INCLUDE CURB & GUTTER WITHIN THE LIMITS OF ENTRANCES.
- ④ 1 FT. WIDE BARRIER TO PROTECT SIDEWALK PEDESTRIAN.
- ⑤ BUILDING REMOVAL (PARCEL 13 & 16) INCLUDES REMOVAL OF ANY STRUCTURES OR SERVICES NOT LISTED AS A BID ITEM.
- ⑥ FOR CONTROLLING DUST CAUSED BY MAINTENANCE OF TRAFFIC ONLY. ESTIMATED AT THE RATE OF 2.125 M GAL PER MILE.
- ⑦ FOR EROSION CONTROL (SEE PLAN SHEET R19).
- ⑧ DOES NOT INCLUDE SIDEWALK WITHIN THE LIMITS OF ENTRANCES.
- ⑨ 553 CUYD OF TOTAL EMBANKMENT SHALL BE TOPSOIL. CALCULATED FROM SODDED AREAS AT A TOPSOIL DEPTH OF 6 INCHES.
- ⑩ FOR 2 PHASES OF MOT, NEEDED ON US 62 AFTER MILLING/TEXTURING AND LEVEL/WEDGING PRIOR TO FINAL SURFACING.
- ⑪ QUANTITY BROUGHT OVER FROM STRIPING PLANS & PARKING LOT DETAIL SHEET R15 & R15A
- ⑫ AGGREGATE BACKFILL & FABRIC-GEOTEXTILE TYPE IV FOR WRAPPING TRENCH EDGEDRAINS IS INCIDENTAL TO THE PERFORATED PIPE.
- ⑬ APPROXIMATELY 3.68 ACRES
- ⑭ INCLUDES FORCEMAIN CLEANOUT
- ⑮ 650 LF OF THE PIPELINE VIDEO INSPECTION QUANTITY IS FOR PIPE INSPECTION OF THE EXISTING STORM SEWER SYSTEM MEASURED AS BEGINNING AT THE EXISTING DROP BOX INLET AT APPROXIMATE STA. 103+09, 33' RT., AND ENDING AT THE OUTLET, BEING LOCATED BEHIND THE BUILDINGS ON THE WEST SIDE OF KY 109. THIS VIDEO INSPECTION IS TO VERIFY THE CONDITION OF THE OUTLET AND SHALL BE IN A DELIVERABLE FORMAT TO THE CITY OF DAWSON SPRINGS PUBLIC WORKS.

US 62 RECONSTRUCTION
GENERAL SUMMARY SHEET

FILE NAME: G:\PWORK\CHARLOTTE_COTTON.D1131698_VR020BSLU.DGN
 USER: charlotte.cotton
 DATE PLOTTED: November 12, 2015
 E-SHEET NAME: R020BSU
 MicroStation v8.11.7.443

REVISED 11/12/2015

105+00

106+00

107+00

108+00

109+00

110+00

SIDEWALK AND ENTRANCE SUMMARY (OFFSETS ARE AT INSIDE EDGE OF SIDEWALK)					CONCRETE ENTRANCES	CRUSHED STONE BASE	SIDEWALK -4 IN CONCRETE	SIDEWALK RAMP TYPE 3	DETECTABLE WARNINGS
DESCRIPTION	STA.	OFFSET	TO STA.	OFFSET	SOYD	TONS	SOYD	EACH	SQFT
SIDEWALK	105+00.00	21.58' RT	105+50.04	21.58' RT	-	-	28.25	-	-
SIDEWALK	105+50.04	21.58' RT	105+58.04	13.58' RT	-	-	6.29	-	-
SIDEWALK	105+58.04	13.58' RT	105+74.66	13.58' RT	-	-	8.66	-	-
ENTRANCE	105+74.66	RT	106+20.66	RT	65.43	6.13	-	-	-
SIDEWALK	106+20.66	13.58' RT	106+22.16	13.58' RT	-	-	0.83	-	-
ENTRANCE	106+22.16	RT	106+68.16	RT	65.34	6.13	-	-	-
SIDEWALK	106+68.16	13.58' RT	106+70.85	13.58' RT	-	-	0.91	-	-
SIDEWALK	106+70.85	13.58' RT	106+78.87	21.58' RT	-	-	6.27	-	-
SIDEWALK	106+78.87	21.58' RT	107+49.05	21.58' RT	-	-	39.87	-	-
SIDEWALK	107+49.05	21.58' RT	107+57.07	13.58' RT	-	-	6.27	-	-
SIDEWALK	107+57.07	13.58' RT	107+74.23	18.58' RT	-	-	6.42	1	8
SIDEWALK	108+11.17	28.58' RT	108+42.67	13.58' RT	-	-	18.22	1	18
SIDEWALK	108+42.67	13.58' RT	108+50.68	21.58' RT	-	-	6.27	-	-
SIDEWALK	108+50.68	21.58' RT	109+43.00	21.58' RT	-	-	52.07	-	-
SIDEWALK	109+43.00	21.58' RT	109+51.01	13.58' RT	-	-	6.27	-	-
SIDEWALK	109+51.01	13.58' RT	109+58.40	13.58' RT	-	-	3.51	-	-
ENTRANCE	109+58.40	RT	110+00.00	RT	79.63	6.13	-	-	-
SIDEWALK	105+00.00	13.58' LT	105+55.56	13.58' LT	-	-	30.96	-	-
ENTRANCE	105+55.56	LT	106+01.56	LT	65.43	6.13	-	-	-
SIDEWALK	106+01.56	13.58' LT	107+49.07	13.58' LT	-	1.26	87.69	-	-
ENTRANCE	107+49.07	LT	107+77.96	LT	37.77	3.07	-	-	-
PULL-IN ENT	107+77.96	LT	108+32.86	LT	51.08	-	-	1	8
ENTRANCE	108+32.86	LT	108+61.75	LT	37.77	3.07	-	-	-
SIDEWALK	108+61.75	13.58' LT	108+88.03	13.58' LT	-	-	14.69	-	-
ENTRANCE	108+88.03	LT	109+33.86	LT	65.43	6.13	-	-	-
SIDEWALK	109+33.86	13.58' LT	109+46.09	13.58' LT	-	-	-	-	-
ENTRANCE	109+46.09	LT	109+86.94	LT	61.18	6.13	-	-	-
SIDEWALK	109+86.94	13.86' LT	109+97.43	18.58' LT	-	-	3.43	1	11
SHEET TOTALS					529.04	44.20	326.88	4	45

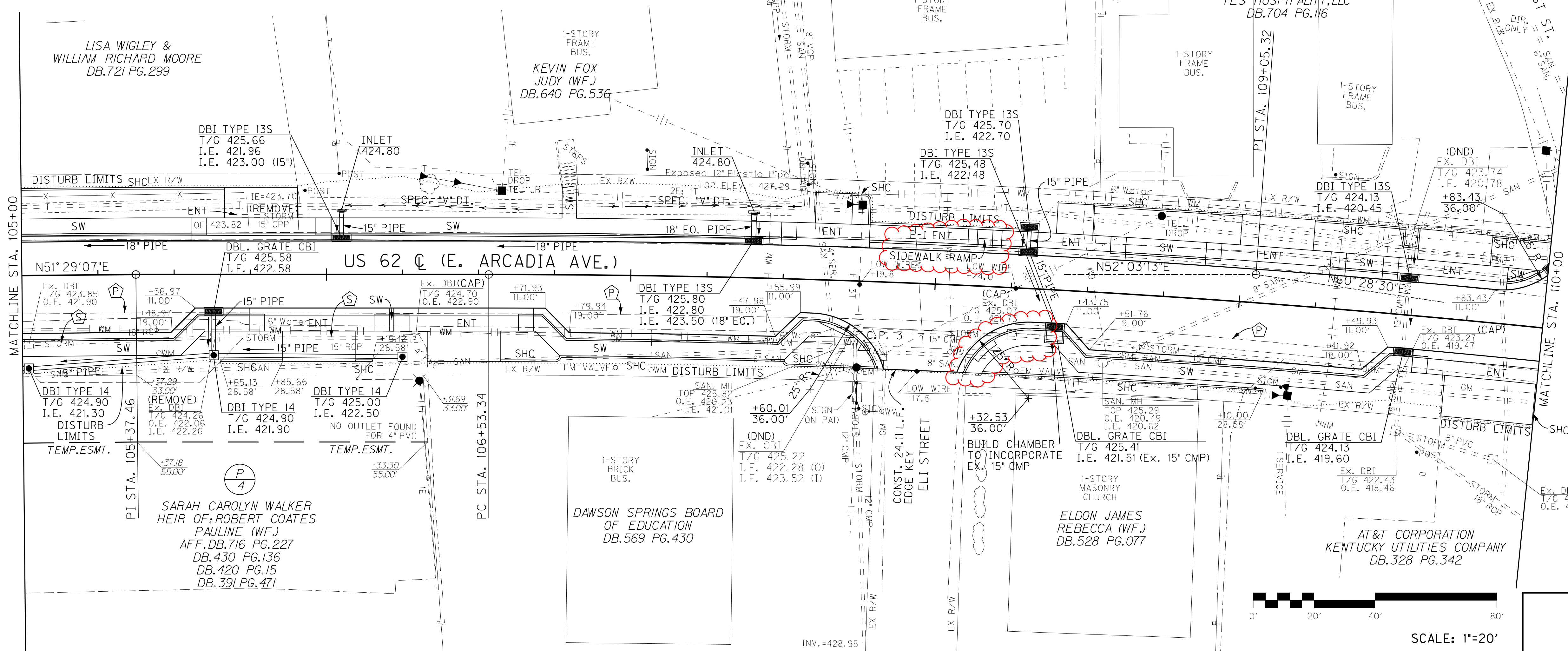
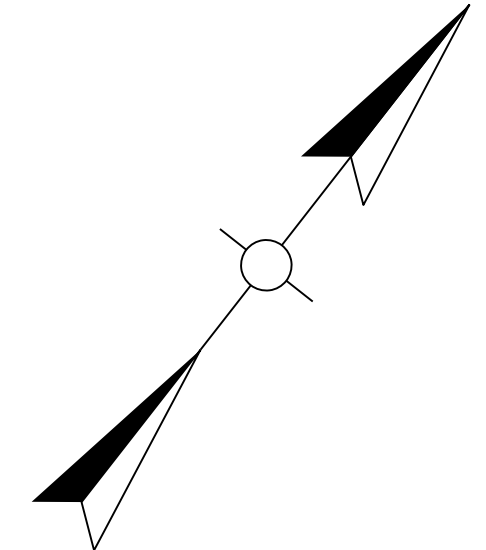
NOTES
 ① DOES NOT INCLUDE C&G WITHIN ENTRANCE PAY LIMITS

CURB SUMMARY (OFFSETS ARE AT FACE OF CURB)				STANDARD CURB AND GUTTER	STANDARD HEADER CURB
STA.	OFFSET	TO STA.	OFFSET	LF	LF
105+00.00	21.00' RT	107+81.99	28.58' RT	206	-
105+65.13	28.58' RT	107+81.36	28.58' RT	-	151
108+10.55	28.58' RT	109+58.40	13.00' RT	161	-
108+16.62	28.58' RT	109+10.00	28.58' RT	-	93
109+99.69	28.58' RT	110+00.00	28.58' RT	-	1
105+00.00	13.00' LT	110+00.00	20.19' LT	258	-
105+00.00	28.58' LT	105+66.56	28.58' LT	-	67
107+71.95	28.58' LT	107+77.94	18.58' LT	-	15
108+50.79	28.58' LT	110+00.00	28.58' LT	-	114
SHEET TOTALS				625	441

DITCH CONST. NOTES - LT					
STATIONS	SIZE/SHAPE	LINING	QUANTITY	D	T
106+00 TO 106+70	SPEC. "V" DT.	E.C.B.	53 sq. yds.	1.0'	--
106+90 TO 107+40	SPEC. "V" DT.	E.C.B.	41 sq. yds.	1.0'	--
107+40 TO 107+50	SPEC. "V" DT.	TRM TYPE I	10 sq. yds.	1.0'	--

US 62 C
 PI STA. 105+37.46
 Δ=0° 34' 05.49" RT

US 62 C
 PI STA. 109+05.32
 Δ=8° 25' 17.23" RT
 T=251.98'
 L=503.05'
 R=3422.50'
 E=9.26'



- Ⓟ STA. 109+83.39, 21.04' LT. ADJUST TEL. MANHOLE
- Ⓟ STA. 107+67.61, 22.75' RT. ADJUST SAN. MANHOLE
- Ⓟ STA. 108+56.42, 22.96' RT. ADJUST SAN. MANHOLE
- Ⓟ WIDEN FOR PARALLEL PARKING FROM EXIST. E.O.P. (STRIPING)
- Ⓟ SAFELOAD

US 62 RECONSTRUCTION
 PLAN SHEET
 STA. 105+00 TO STA. 110+00

FILE NAME: G:\ESHEET\RO0500PL.DGN
 USER: tse
 DATE PLOTTED: November 4, 2015
 E-SHEET NAME: RO0500PL
 MicroStation v8.11.7.443

US 62 C
 PI STA. 119+54.65
 Δ=0°17'15.52" LT

LAURA ELLEN DUNCAN
 DB.714 PG.732

KENNETH BARNETT
 DB.618 PG.378

FRANKLIN D.HUNT
 DOROTHY J.(WF.)
 DB.295 PG.376

HAROLD G.PEACH
 GAYLA O.(WF.)
 DB.690 PG.235

COLEEN SUE MORRIS SMILEY
 DANNIE O'SHEA MORRIS NICHOLS
 BETTY ANN MORRIS WISE
 ESTELLE MORRIS
 DB.483 PG.581

STATIONS	SIZE/SHAPE	LINING	QUANTITY	D	T
118+55 TO 119+25	2' F.B. SPEC. DT.	E.C.B.	62 sq. yds.	1.0'	--
119+25 TO 119+45	2' F.B. SPEC. DT.	E.C.B.	23 sq. yds.	1.5'	--

US 62 C STA. 117+35.56 =
 S. PARKER ST. C STA. 50+00.00

US 62 C (E. ARCADIA AVE.)

S. PARKER ST. C

END CONSTRUCTION
 S. PARKER ST. C STA. 50+64.00

DESCRIPTION	STA.	OFFSET	TO STA.	OFFSET	ENTRANCES		CRUSHED STONE BASE SOYD	SIDEWALK -4 IN CONCRETE SOYD	SIDEWALK RAMP TYPE 3 EACH	DETECT. WARNINGS SOFT
					CONC	ASPH				
PULL-IN ENT	115+00.00	RT	115+99.02	RT	91.68	*117.36	-	-	-	-
SIDEWALK	115+99.02	13.58' RT	116+52.25	13.58' RT	-	-	-	29.57	-	-
ENTRANCE	116+52.25	RT	116+98.25	RT	65.43	-	6.13	-	-	-
SIDEWALK	116+98.25	13.58' RT	117+13.53	13.58' RT	-	-	-	10.48	-	21
SIDEWALK	117+59.49	13.58' RT	118+87.68	13.58' RT	-	-	-	74.74	-	8
ENTRANCE	118+87.68	RT	119+46.06	RT	-	*94.15	-	-	-	-
SIDEWALK	119+46.06	13.58' RT	120+00.00	13.58' RT	-	-	-	31.40	-	-
SIDEWALK	115+00.00	21.58' LT	116+01.76	21.58' LT	-	-	-	57.11	-	-
SIDEWALK	116+01.76	21.58' LT	116+09.76	13.58' LT	-	-	-	6.29	-	-
SIDEWALK	116+09.76	13.58' LT	116+13.86	13.58' LT	-	-	-	1.70	-	-
ENTRANCE	116+13.86	LT	116+59.86	LT	65.43	-	6.13	-	-	-
SIDEWALK	116+59.86	13.58' LT	117+13.53	23.65' LT	-	-	-	30.33	1	32
SIDEWALK	117+48.71	18.58' LT	118+20.30	13.58' LT	-	-	-	37.29	1	8
ENTRANCE	118+20.30	LT	118+66.30	LT	65.43	-	6.13	-	-	-
SIDEWALK	118+66.30	13.58' LT	119+42.87	18.58' LT	-	-	-	40.86	-	8
SIDEWALK	119+42.87	13.58' LT	120+00.00	LT	18.98	-	-	-	-	8
SHEET TOTALS					306.94	211.51	18.40	319.77	2	85

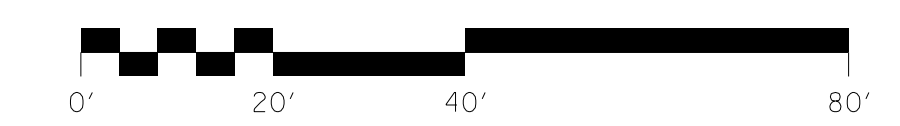
DITCH CONST. NOTES - RT

STATIONS	SIZE/SHAPE	LINING	QUANTITY	D	T	GTF TYPE 1
119+50 TO 119+70	2' F.B. SPEC. DT.	E.C.B.	19 sq. yds.	1.0'	--	--
119+70 TO 120+00	2' F.B. SPEC. DT.	CLASS II	24 tons	1.5'	15'	38 sq. yds.

- NOTES
 ① DOES NOT INCLUDE C&G WITHIN ENTRANCE PAY LIMITS
 ② DOES NOT INCLUDE CURBING FOR FLUMES

CURB SUMMARY (OFFSETS ARE AT FACE OF CURB)				STANDARD CURB AND GUTTER LF	STANDARD HEADER CURB LF
STA.	OFFSET	TO STA.	OFFSET		
115+99.02	13.00' RT	117+12.34	13.00' RT	67	①
115+99.02	18.58' RT	116+63.25	28.58' RT	-	74
117+60.76	13.00' RT	120+00.00	13.00' RT	180	①
50+18.58*	20.53' LT*	50+64.00*	14.27' LT*	-	48
115+00.00	21.00' LT	117+16.59	28.58' LT	181	①
115+71.87	28.58' LT	117+15.98	28.58' LT	-	120
117+41.05	28.58' LT	119+34.73	13.00' LT	155	①
117+53.91	28.58' LT	118+31.30	28.58' LT	-	77
SHEET TOTALS				583	319

*STA/OFF FROM S. PARKER ST.



SCALE: 1"=20'

US 62 RECONSTRUCTION
 PLAN SHEET
 STA. 115+00 TO STA. 120+00

FILE NAME: G:\ESHEET\RO0900PL.DGN

USER: fse
 DATE PLOTTED: November 4, 2015

E-SHEET NAME: RO0900PL

MicroStation v8.11.7.443

REVISED 11/12/2015

US 62 C
PI STA. 119+54.65
Δ=0°17'15.52" LT

LAURA ELLEN DUNCAN
DB.714 PG.732

KENNETH BARNETT
DB.618 PG.378

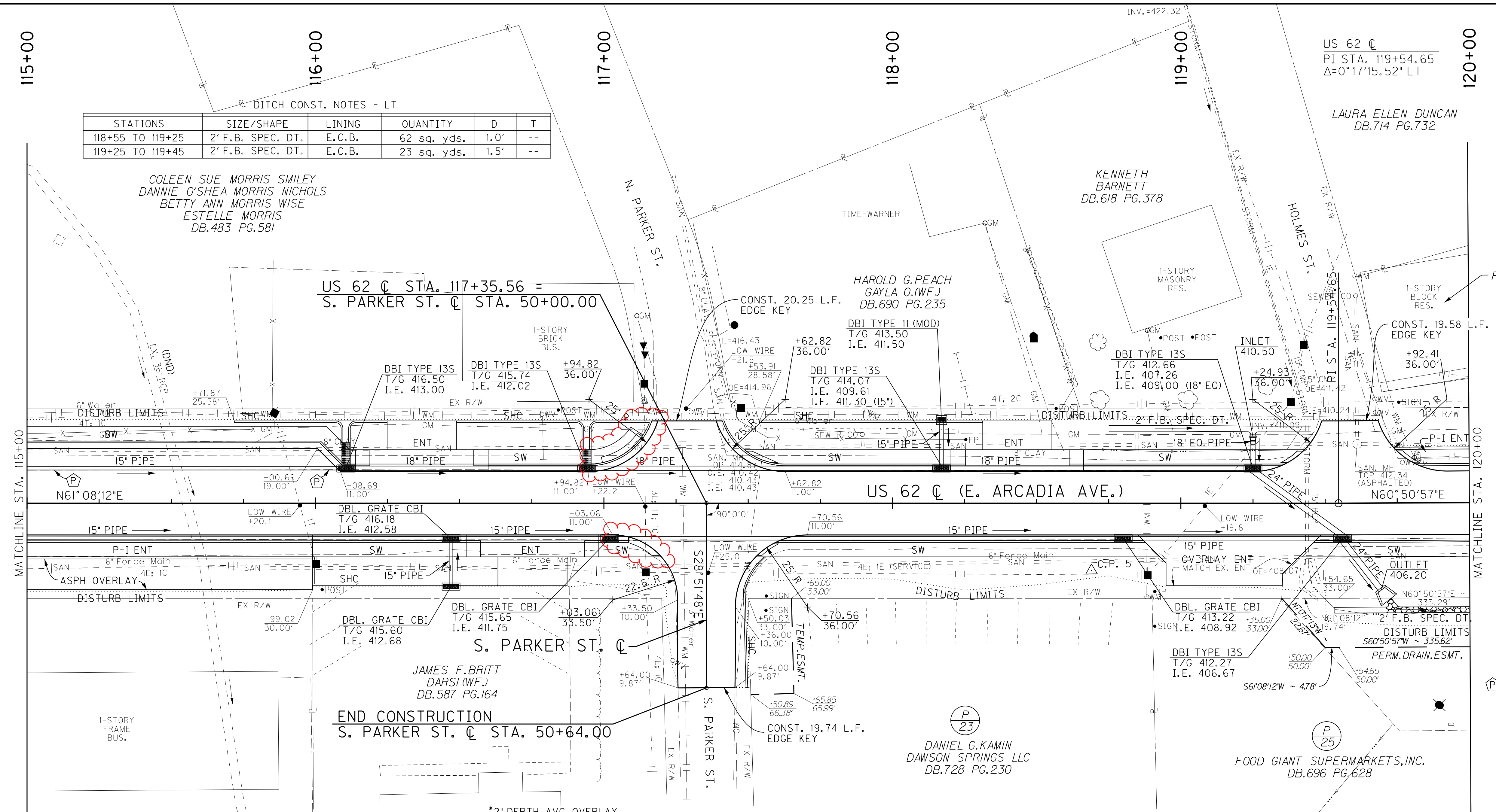
FRANKLIN D.HUNT
DOROTHY J.(WF.)
DB.295 PG.376

HAROLD G.PEACH
GAYLA O.(WF.)
DB.690 PG.235

COLEEN SUE MORRIS SMILEY
DANNIE O'SHEA MORRIS NICHOLS
BETTY ANN MORRIS WISE
ESTELLE MORRIS
DB.483 PG.581

US 62 C STA. 117+35.56 =
S. PARKER ST. C STA. 50+00.00

END CONSTRUCTION
S. PARKER ST. C STA. 50+64.00



STATIONS	SIZE/SHAPE	LINING	QUANTITY	D	T
118+55 TO 119+25	2' F.B. SPEC. DT.	E.C.B.	62 sq. yds.	1.0'	--
119+25 TO 119+45	2' F.B. SPEC. DT.	E.C.B.	23 sq. yds.	1.5'	--

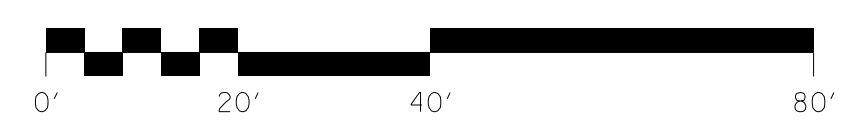
DESCRIPTION	STA.	OFFSET	TO STA.	OFFSET	ENTRANCES		CRUSHED STONE BASE SOYD	SIDEWALK -4 IN CONCRETE SOYD	SIDEWALK RAMP TYPE 3 EACH	DETECT. WARNINGS SOFT
					CONC	ASPH				
PULL-IN ENT	115+00.00	RT	115+99.02	RT	91.68	*117.36	-	-	-	-
SIDEWALK	115+99.02	13.58' RT	116+52.25	13.58' RT	-	-	-	29.57	-	-
ENTRANCE	116+52.25	RT	116+98.25	RT	65.43	-	6.13	-	-	-
SIDEWALK	116+98.25	13.58' RT	117+13.53	13.58' RT	-	-	-	10.48	-	21
SIDEWALK	117+59.49	13.58' RT	118+87.68	13.58' RT	-	-	-	74.74	-	8
ENTRANCE	118+87.68	RT	119+46.06	RT	-	*94.15	-	-	-	-
SIDEWALK	119+46.06	13.58' RT	120+00.00	13.58' RT	-	-	-	31.40	-	-
SIDEWALK	115+00.00	21.58' LT	116+01.76	21.58' LT	-	-	-	57.11	-	-
SIDEWALK	116+01.76	21.58' LT	116+09.76	13.58' LT	-	-	-	6.29	-	-
SIDEWALK	116+09.76	13.58' LT	116+13.86	13.58' LT	-	-	-	1.70	-	-
ENTRANCE	116+13.86	LT	116+59.86	LT	65.43	-	6.13	-	-	-
SIDEWALK	116+59.86	13.58' LT	117+13.53	23.65' LT	-	-	-	30.33	1	32
SIDEWALK	117+48.71	18.58' LT	118+20.30	13.58' LT	-	-	-	37.29	1	8
ENTRANCE	118+20.30	LT	118+66.30	LT	65.43	-	6.13	-	-	-
SIDEWALK	118+66.30	13.58' LT	119+42.87	18.58' LT	-	-	-	40.86	-	8
SIDEWALK	119+74.47	LT	120+00.00	LT	18.98	-	-	-	-	8
SHEET TOTALS					306.94	211.51	18.40	319.77	2	85

STATIONS	SIZE/SHAPE	LINING	QUANTITY	D	T	GTF TYPE 1
119+50 TO 119+70	2' F.B. SPEC. DT.	E.C.B.	19 sq. yds.	1.0'	--	--
119+70 TO 120+00	2' F.B. SPEC. DT.	CLASS II	24 tons	1.5'	15'	38 sq. yds.

NOTES
 ① DOES NOT INCLUDE C&G WITHIN ENTRANCE PAY LIMITS
 ② DOES NOT INCLUDE CURBING FOR FLUMES

STA.	OFFSET	TO STA.	OFFSET	STANDARD CURB AND GUTTER LF	STANDARD HEADER CURB LF
115+99.02	13.00' RT	117+12.34	13.00' RT	67	①
115+99.02	18.58' RT	116+63.25	28.58' RT	-	74
117+60.76	13.00' RT	120+00.00	13.00' RT	180	①
50+18.58*	20.53' LT*	50+64.00*	14.27' LT*	-	48
115+00.00	21.00' LT	117+16.59	28.58' LT	181	①
115+71.87	28.58' LT	117+15.98	28.58' LT	-	120
117+41.05	28.58' LT	119+34.73	13.00' LT	155	①
117+53.91	28.58' LT	118+31.30	28.58' LT	-	77
SHEET TOTALS				583	319

*STA/OFF FROM S. PARKER ST.



SCALE: 1"=20'

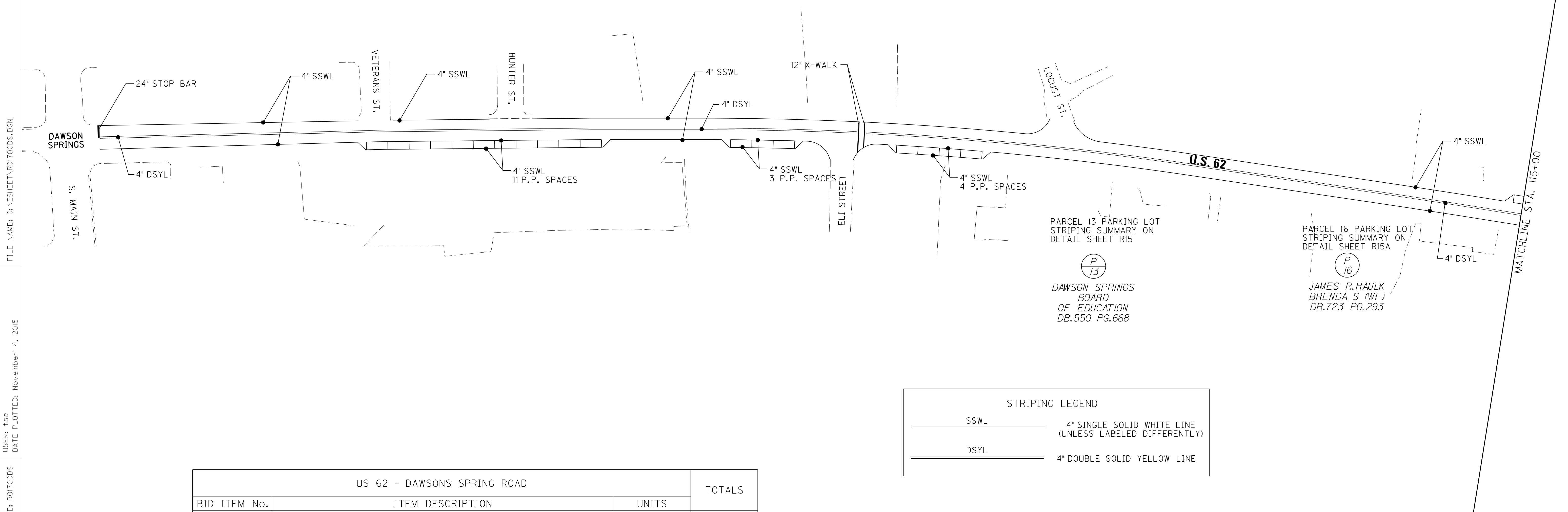
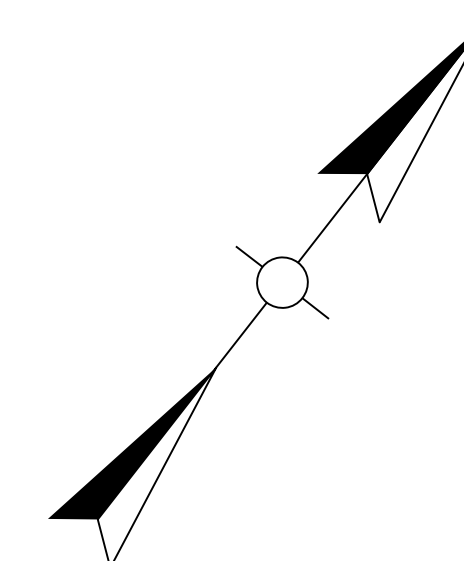
US 62 RECONSTRUCTION
PLAN SHEET
STA. 115+00 TO STA. 120+00

FILE NAME: G:\ESHEET\RO0900PL.DGN
 USER: tse
 DATE PLOTTED: November 4, 2015
 E-SHEET NAME: RO0900PL
 MicroStation v8.11.7.443

100+00 101+00 102+00 103+00 104+00 105+00 106+00 107+00 108+00 109+00 110+00 111+00 112+00 113+00 114+00 115+00

NOTES FOR STRIPING PLANS:

1. PAVEMENT MARKINGS SHALL BE APPLIED IN ACCORDANCE WITH THE MANUAL ON UNIFORM TRAFFIC CONTROL DEVICES (CURRENT EDITION), AND FHWA'S STANDARD HIGHWAY SIGNS AND PAVEMENT MARKINGS (CURRENT EDITION).
2. THE STATIONED CENTERLINES FOR THE MAINLINE AND CROSSROADS HAVE NOT BEEN SHOWN FOR CLARITY.
3. PARALLEL PARKING (P.P.) SPACES SHALL BE 22' LONG x 8' WIDE.



PARCEL 13 PARKING LOT
STRIPING SUMMARY ON
DETAIL SHEET R15

P
13

DAWSON SPRINGS
BOARD
OF EDUCATION
DB.550 PG.668

PARCEL 16 PARKING LOT
STRIPING SUMMARY ON
DETAIL SHEET R15A

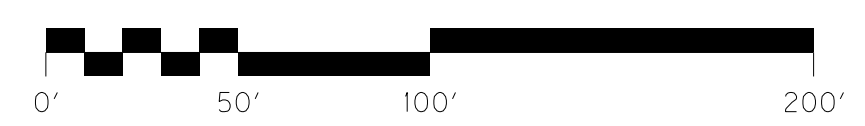
P
16

JAMES R. HAULK
BRENDA S. (WF)
DB.723 PG.293

STRIPING LEGEND	
SSWL	4" SINGLE SOLID WHITE LINE (UNLESS LABELED DIFFERENTLY)
DSYL	4" DOUBLE SOLID YELLOW LINE

US 62 - DAWSONS SPRING ROAD			TOTALS
BID ITEM No.	ITEM DESCRIPTION	UNITS	
6514	PAVEMENT STRIPING - PERMANENT PAINT - 4" W	LF	4,580
6514	PAVEMENT STRIPING - PERMANENT PAINT - 4" Y	LF	6,474
6566	PAVE MARKING-THERMO X-WALK-12" W	LF	119
6568	PAVE MARKING-THERMO STOP BAR-24IN	LF	12

TOTALS CARRIED FORWARD TO GENERAL SUMMARY



SCALE: 1"=50'

US 62 RECONSTRUCTION
STRIPING PLAN
STA. 100+28.00 TO STA. 115+00

FILE NAME: G:\SHEET\ROITOODS.DGN

USER: fse
DATE PLOTTED: November 4, 2015

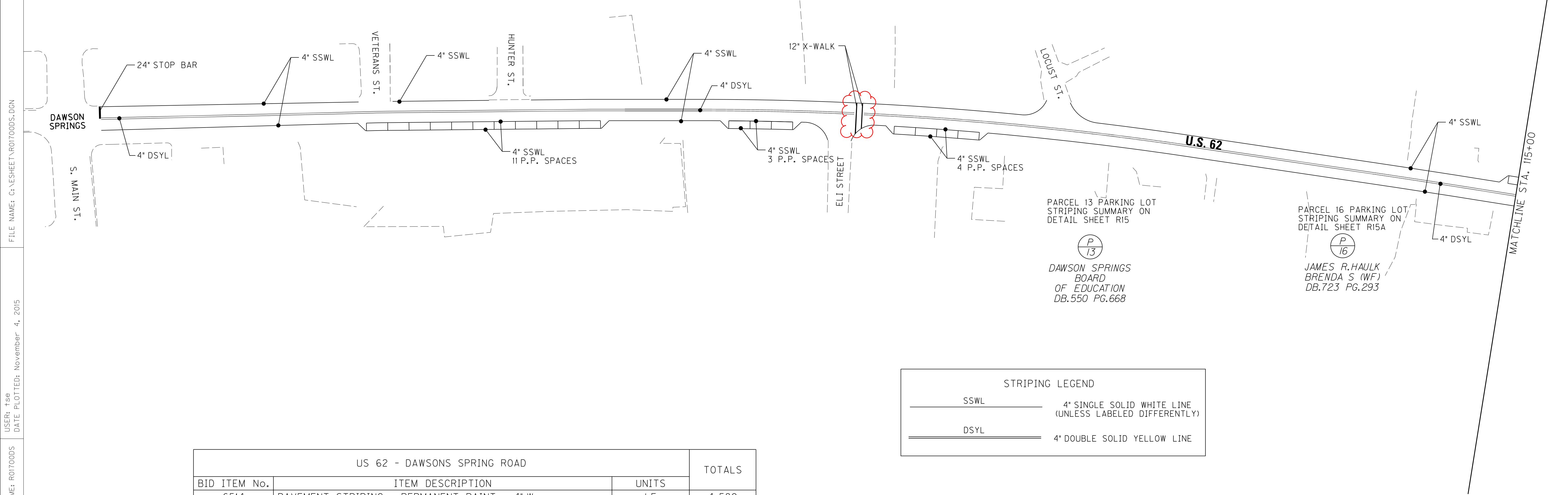
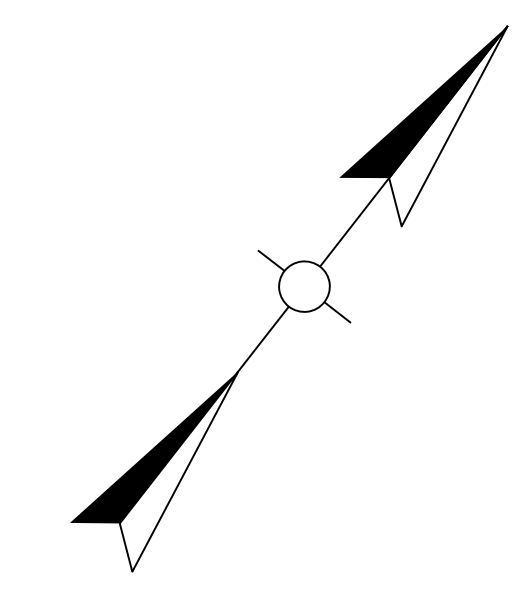
E-SHEET NAME: ROITOODS

MicroStation v8.11.7.443

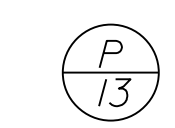
100+00 101+00 102+00 103+00 104+00 105+00 106+00 107+00 108+00 109+00 110+00 111+00 112+00 113+00 114+00 115+00

NOTES FOR STRIPING PLANS:

1. PAVEMENT MARKINGS SHALL BE APPLIED IN ACCORDANCE WITH THE MANUAL ON UNIFORM TRAFFIC CONTROL DEVICES (CURRENT EDITION), AND FHWA'S STANDARD HIGHWAY SIGNS AND PAVEMENT MARKINGS (CURRENT EDITION).
2. THE STATIONED CENTERLINES FOR THE MAINLINE AND CROSSROADS HAVE NOT BEEN SHOWN FOR CLARITY.
3. PARALLEL PARKING (P.P.) SPACES SHALL BE 22' LONG x 8' WIDE.

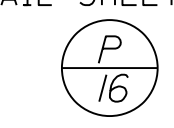


PARCEL 13 PARKING LOT
STRIPING SUMMARY ON
DETAIL SHEET R15



DAWSON SPRINGS
BOARD
OF EDUCATION
DB.550 PG.668

PARCEL 16 PARKING LOT
STRIPING SUMMARY ON
DETAIL SHEET R15A

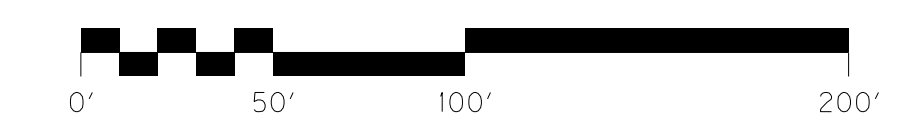


JAMES R. HAULK
BRENDA S (WF)
DB.723 PG.293

STRIPING LEGEND	
SSWL	4" SINGLE SOLID WHITE LINE (UNLESS LABELED DIFFERENTLY)
DSYL	4" DOUBLE SOLID YELLOW LINE

US 62 - DAWSONS SPRING ROAD			TOTALS
BID ITEM No.	ITEM DESCRIPTION	UNITS	
6514	PAVEMENT STRIPING - PERMANENT PAINT - 4" W	LF	4,580
6514	PAVEMENT STRIPING - PERMANENT PAINT - 4" Y	LF	6,474
6566	PAVE MARKING-THERMO X-WALK-12" W	LF	119
6568	PAVE MARKING-THERMO STOP BAR-24IN	LF	12

TOTALS CARRIED FORWARD TO GENERAL SUMMARY



SCALE: 1"=50'

US 62 RECONSTRUCTION
STRIPING PLAN
STA. 100+28.00 TO STA. 115+00

FILE NAME: G:\ESHEET\ROITOODS.DGN

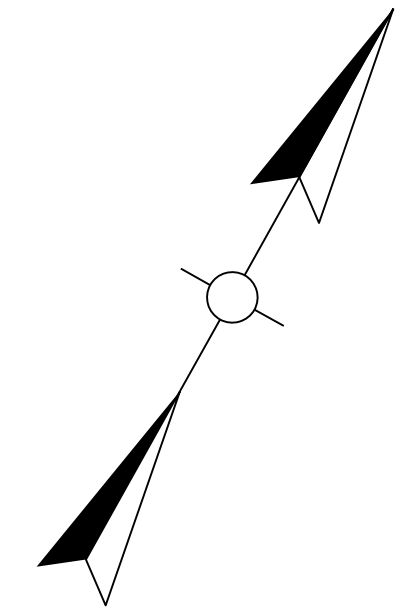
USER: fse
DATE PLOTTED: November 4, 2015

E-SHEET NAME: ROITOODS

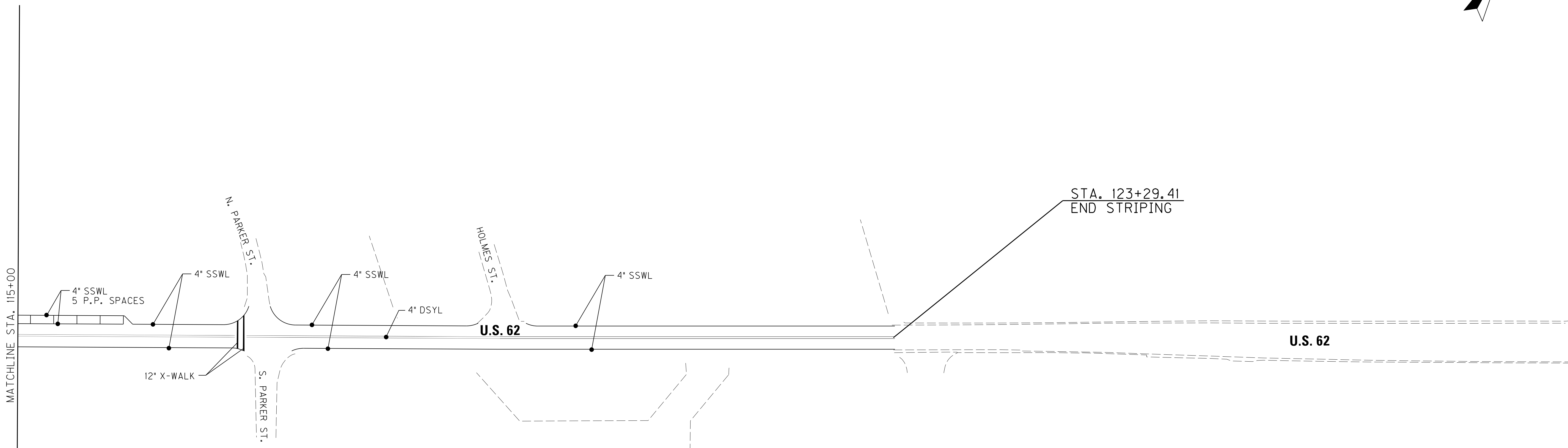
MicroStation v8.11.7.443

COUNTY OF	ITEM NO.	SHEET NO.
HOPKINS	02-8501.00	R18

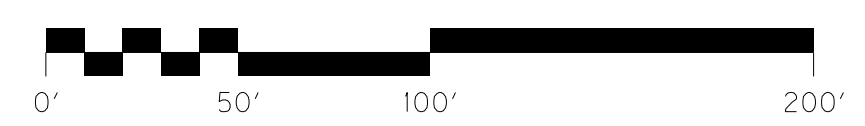
REVISED 11/12/2015



115+00 116+00 117+00 118+00 119+00 120+00 121+00 122+00 123+00 124+00



STRIPING LEGEND	
SSWL	4\"/> SINGLE SOLID WHITE LINE (UNLESS LABELED DIFFERENTLY)
DSYL	4\"/> DOUBLE SOLID YELLOW LINE



SCALE: 1"=50'

US 62 RECONSTRUCTION
STRIPING PLAN
STA. 115+00 TO STA. 123+29.41

FILE NAME: G:\SHEET\RO8000S.DGN

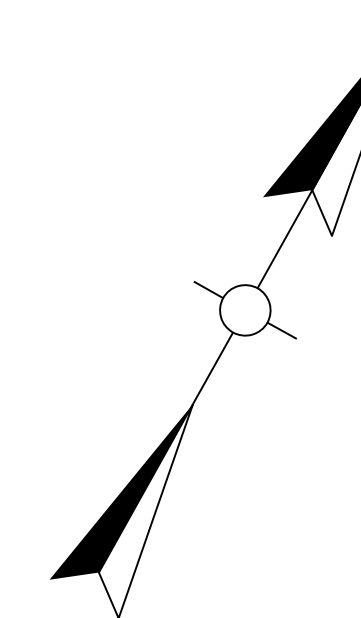
USER: fse
DATE PLOTTED: October 1, 2015

E-SHEET NAME: RO8000S

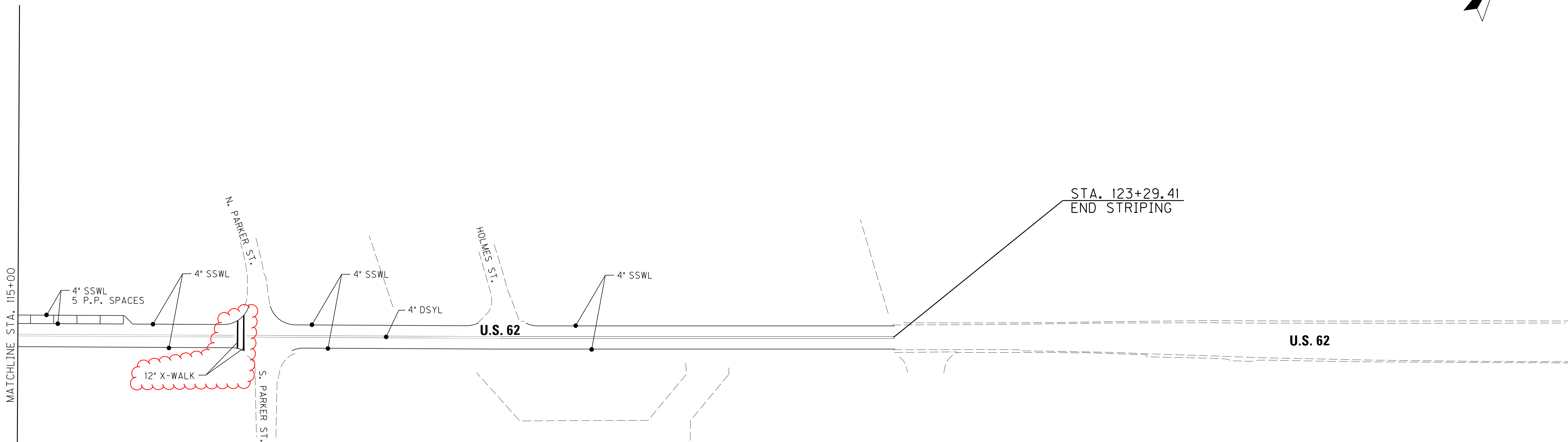
MicroStation v8.11.7.443

COUNTY OF	ITEM NO.	SHEET NO.
HOPKINS	02-8501.00	R18

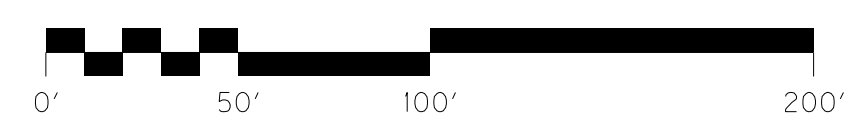
REVISED 11/12/2015



115+00 116+00 117+00 118+00 119+00 120+00 121+00 122+00 123+00 124+00



STRIPING LEGEND	
SSWL	4\"/> SINGLE SOLID WHITE LINE (UNLESS LABELED DIFFERENTLY)
DSYL	4\"/> DOUBLE SOLID YELLOW LINE



SCALE: 1"=50'

US 62 RECONSTRUCTION
STRIPING PLAN
STA. 115+00 TO STA. 123+29.41

FILE NAME: G:\ESHEET\RO8000S.DGN

USER: fse
DATE PLOTTED: October 1, 2015

E-SHEET NAME: RO8000S

MicroStation v8.11.7.443

PROPOSAL BID ITEMS

REVISED ADDEDNUM #1: 11-13-15

151080

Page 1 of 3

Report Date 11/13/15

Section: 0001 - PAVING

LINE	BID CODE	ALT	DESCRIPTION	QUANTITY	UNIT	UNIT PRIC	FP	AMOUNT
0010	00003		CRUSHED STONE BASE	3,104.00	TON		\$	
0020	00100		ASPHALT SEAL AGGREGATE	2.04	TON		\$	
0030	00103		ASPHALT SEAL COAT	.24	TON		\$	
0040	00190		LEVELING & WEDGING PG64-22	474.00	TON		\$	
0050	00212		CL2 ASPH BASE 1.00D PG64-22	1,286.00	TON		\$	
0060	02101		CEM CONC ENT PAVEMENT-8 IN	2,020.00	SQYD		\$	
0070	02677		ASPHALT PAVE MILLING & TEXTURING	508.00	TON		\$	
0080	23362ES403		CL2 ASPH SURF 0.5B PG64-22	826.00	TON		\$	

Section: 0002 - ROADWAY

LINE	BID CODE	ALT	DESCRIPTION	QUANTITY	UNIT	UNIT PRIC	FP	AMOUNT
0090	01000		PERFORATED PIPE-4 IN	3,689.00	LF		\$	
0100	01010		NON-PERFORATED PIPE-4 IN	96.00	LF		\$	
0110	01015		INSPECT & CERTIFY EDGE DRAIN SYSTEM	1.00	LS		\$	
0120	01740		CORED HOLE DRAINAGE BOX CON-4 IN	24.00	EACH		\$	
0130	01791		ADJUST MANHOLE FRAME TO GRADE	2.00	EACH		\$	
0140	01792		ADJUST MANHOLE	6.00	EACH		\$	
0150	01810		STANDARD CURB AND GUTTER	2,790.00	LF		\$	
0160	01875		STANDARD HEADER CURB	1,620.00	LF		\$	
0170	01922		STANDARD BARRIER MEDIAN TYPE 4 MOD	9.00	SQYD		\$	
0180	02014		BARRICADE-TYPE III	4.00	EACH		\$	
0190	02191		STRUCTURE DEMOLITION	2.00	EACH		\$	
0200	02200		ROADWAY EXCAVATION	2,305.00	CUYD		\$	
0210	02242		WATER	1.00	MGAL		\$	
0220	02483		CHANNEL LINING CLASS II	47.00	TON		\$	
0230	02545		CLEARING AND GRUBBING 3.68 ACRES	1.00	LS		\$	
0240	02562		TEMPORARY SIGNS	150.00	SQFT		\$	
0250	02585		EDGE KEY	220.00	LF		\$	
0260	02650		MAINTAIN & CONTROL TRAFFIC	1.00	LS		\$	
0270	02671		PORTABLE CHANGEABLE MESSAGE SIGN	2.00	EACH		\$	
0280	02676		MOBILIZATION FOR MILL & TEXT	1.00	LS		\$	
0290	02690		SAFELOADING	11.04	CUYD		\$	
0300	02701		TEMP SILT FENCE	500.00	LF		\$	
0310	02703		SILT TRAP TYPE A	2.00	EACH		\$	
0320	02704		SILT TRAP TYPE B	2.00	EACH		\$	
0330	02705		SILT TRAP TYPE C	74.00	EACH		\$	
0340	02706		CLEAN SILT TRAP TYPE A	4.00	EACH		\$	
0350	02707		CLEAN SILT TRAP TYPE B	4.00	EACH		\$	
0360	02708		CLEAN SILT TRAP TYPE C	148.00	EACH		\$	
0370	02720		SIDEWALK-4 IN CONCRETE (REVISED: 11-13-15)	1,315.00	SQYD		\$	
0380	02726		STAKING	1.00	LS		\$	
0390	05950		EROSION CONTROL BLANKET	321.00	SQYD		\$	
0400	05963		INITIAL FERTILIZER	.19	TON		\$	
0410	05964		20-10-10 FERTILIZER	.19	TON		\$	

PROPOSAL BID ITEMS

REVISED ADDEDNUM #1: 11-13-15

151080

Page 2 of 3

Report Date 11/13/15

LINE	BID CODE	ALT	DESCRIPTION	QUANTITY	UNIT	UNIT PRIC	FP	AMOUNT
0420	05990		SODDING	3,319.00	SQYD		\$	
0430	05997		TOPSOIL FURNISHED AND PLACED	553.00	CUYD		\$	
0440	06510		PAVE STRIPING-TEMP PAINT-4 IN	22,108.00	LF		\$	
0450	06514		PAVE STRIPING-PERM PAINT-4 IN	12,378.00	LF		\$	
0460	06566		PAVE MARKING-THERMO X-WALK-12 IN (REVISED: 11-13-15)	119.00	LF		\$	
0470	06568		PAVE MARKING-THERMO STOP BAR-24IN	12.00	LF		\$	
0480	06570		PAVE MARKING-PAINT CROSS-HATCH	541.00	SQFT		\$	
0490	06601NC		PAVE MARKING-PAINT WORDS	2.00	EACH		\$	
0500	20206EC		PAVE MARK HANDICAP SYMBOL	4.00	EACH		\$	
0510	20550ND		SAWCUT PAVEMENT	4,122.00	LF		\$	
0520	23158ES505		DETECTABLE WARNINGS (REVISED: 11-13-15)	192.00	SQFT		\$	
0530	23274EN11F		TURF REINFORCEMENT MAT 1	154.00	SQYD		\$	
0540	23327EC		PIPE CLEANOUT EXTENSION	2.00	EACH		\$	
0550	23802EC		PRECAST VEHICLE STOP	4.00	EACH		\$	
0560	24814EC		PIPELINE INSPECTION	3,987.00	LF		\$	

Section: 0003 - DRAINAGE

LINE	BID CODE	ALT	DESCRIPTION	QUANTITY	UNIT	UNIT PRIC	FP	AMOUNT
0570	00445		ENTRANCE PIPE-30 IN	68.00	LF		\$	
0580	00521		STORM SEWER PIPE-15 IN	1,655.00	LF		\$	
0590	00522		STORM SEWER PIPE-18 IN	1,120.00	LF		\$	
0600	00524		STORM SEWER PIPE-24 IN	188.00	LF		\$	
0610	00552		STORM SEWER PIPE-18 IN EQUIV	18.00	LF		\$	
0620	01204		PIPE CULVERT HEADWALL-18 IN	1.00	EACH		\$	
0630	01208		PIPE CULVERT HEADWALL-24 IN	2.00	EACH		\$	
0640	01210		PIPE CULVERT HEADWALL-30 IN	2.00	EACH		\$	
0650	01390		METAL END SECTION TY 3-15 IN	2.00	EACH		\$	
0660	01391		METAL END SECTION TY 3-18 IN 18 IN EQUIVALENT	2.00	EACH		\$	
0670	01459		CURB BOX INLET TYPE A MOD	1.00	EACH		\$	
0680	01545		DROP BOX INLET TYPE 11 MOD	1.00	EACH		\$	
0690	01559		DROP BOX INLET TYPE 13G	1.00	EACH		\$	
0700	01568		DROP BOX INLET TYPE 13S	26.00	EACH		\$	
0710	01568		DROP BOX INLET TYPE 13S MODIFIED	1.00	EACH		\$	
0720	01577		DROP BOX INLET TYPE 14	4.00	EACH		\$	
0730	01584		CAP DROP BOX INLET	3.00	EACH		\$	
0740	01689		FLUME INLET TYPE 1 MOD	6.00	EACH		\$	
0750	01756		MANHOLE TYPE A	1.00	EACH		\$	
0760	02600		FABRIC GEOTEXTILE TY IV FOR PIPE	4,296.00	SQYD	\$2.00	\$	\$8,592.00
0770	20366NN		REPLACE GRATE	1.00	EACH		\$	
0780	23775EC		TRENCH DRAIN CHANNEL THROUGH SIDEWALK-SIDEWALK UNDERDRAIN	7.00	EACH		\$	
0790	23822EC		CORED HOLE DRAINAGE BOX CON-15 IN	1.00	EACH		\$	
0800	23934EC		DOUBLE FRAME & GRATE CURB BOX INLET	14.00	EACH		\$	

151080

PROPOSAL BID ITEMS

Page 3 of 3

Report Date 11/13/15

Section: 0004 - BRIDGE

LINE	BID CODE	ALT	DESCRIPTION	QUANTITY	UNIT	UNIT PRIC	FP	AMOUNT
0810	08001		STRUCTURE EXCAVATION-COMMON	34.40	CUYD		\$	
0820	08100		CONCRETE-CLASS A	6.60	CUYD		\$	
0830	08150		STEEL REINFORCEMENT	772.00	LB		\$	
0840	24567ED		TRUSS BRIDGE SUPERSTRUCTURE	1.00	LS		\$	

Section: 0005 - WATERLINE

LINE	BID CODE	ALT	DESCRIPTION	QUANTITY	UNIT	UNIT PRIC	FP	AMOUNT
0850	03423		REMOVE METER	2.00	EACH		\$	
0860	03425		ADJUST WATER VALVE	7.00	EACH		\$	
0870	03427		ADJUST WATER METER	1.00	EACH		\$	
0880	03431		RELOCATE WATER METER	1.00	EACH		\$	
0890	14057		W PIPE PVC 03 INCH	36.00	LF		\$	
0900	14059		W PIPE PVC 06 INCH	20.00	LF		\$	
0910	15060		S FORCE MAIN PVC 06 INCH	695.00	LF		\$	
0920	20697ND		ADJUST VALVE BOX TO GRADE	1.00	EACH		\$	

Section: 0006 - DEMOBILIZATION &/OR MOBILIZATION

LINE	BID CODE	ALT	DESCRIPTION	QUANTITY	UNIT	UNIT PRIC	FP	AMOUNT
0930	02569		DEMOBILIZATION	1.00	LS		\$	